

PLEASE CHECK WWW.MOLEX.COM FOR LATEST PART INFORMATION

Part Number: [0354388000](#)
Status: **Active**
Overview: [bulb sockets](#)
Description: Contact Terminal for PT Bulb Socket, 0.5-0.85mm²; Wire

Documents:

[Drawing \(PDF\)](#) [RoHS Certificate of Compliance \(PDF\)](#)
[Product Specification PS-35532-001 \(PDF\)](#)

General

| | |
|-------------------------|------------------------------|
| Product Family | Crimp Terminals |
| Series | 35438 |
| Crimp Quality Equipment | Yes |
| Overview | bulb sockets |
| Product Name | Bulb Socket |

Physical

| | |
|------------------------------|--------------------------|
| Gender | Female |
| Material - Metal | Phosphor Bronze |
| Material - Plating Mating | Unplated |
| Packaging Type | Reel |
| Termination Interface: Style | Crimp or Compression |
| Wire Insulation Diameter | 1.80-2.80mm (.070-.110") |
| Wire Size AWG | N/A |
| Wire Size mm ² | 0.50 TO 0.85 |

Material Info

Reference - Drawing Numbers

| | |
|-------------------------|--------------|
| Packaging Specification | PK-35438-001 |
| Product Specification | PS-35532-001 |
| Sales Drawing | SD-35438-001 |

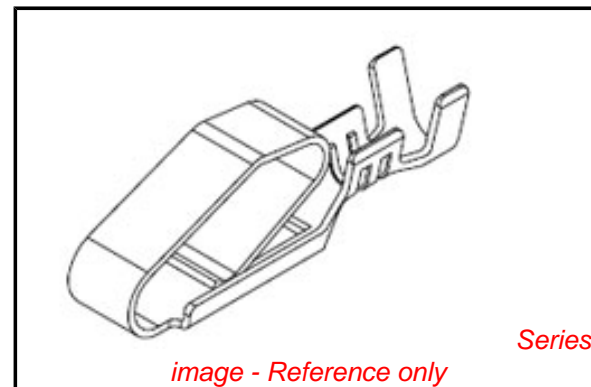


image - Reference only

EU RoHS

**ELV and RoHS
Compliant**
**REACH SVHC
Contains SVHC: No**
**Halogen-Free
Status**

China RoHS



**Need more information on product
environmental compliance?**

Email productcompliance@molex.com
 For a multiple part number RoHS Certificate of Compliance, [click here](#)

Please visit the [Contact Us](#) section for any non-product compliance questions.

Search Parts in this Series

[35438Series](#)

Use With

[35532](#) , [35533](#)

Application Tooling | FAQ

Tooling specifications and manuals are found by selecting the products below. Crimp Height Specifications are then contained in the Application Tooling Specification document.

Global

| Description | Product # |
|-----------------------------------------------------------------------------------------------------------------|----------------------------|
| FineAdjust™ Applicator for Bulb Socket Contact Terminals | 0639011600 |
| Extractor Tool for Crimp Terminals for PT Bulb Socket 0.5-0.85mm ² AWG and 2.0mm (.079") | 0638133600 |

Bulb-Socket Earth
Terminal
Hand Crimp Tool for [0638194900](#)
Bulb Socket Contact
Terminal for 0.50 to
0.85mm² AWG

This document was generated on 06/01/2010

PLEASE CHECK WWW.MOLEX.COM FOR LATEST PART INFORMATION

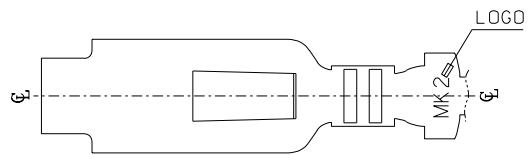
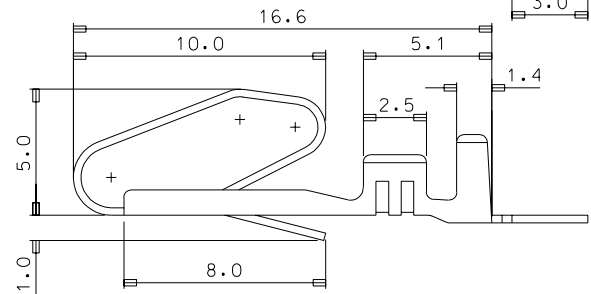
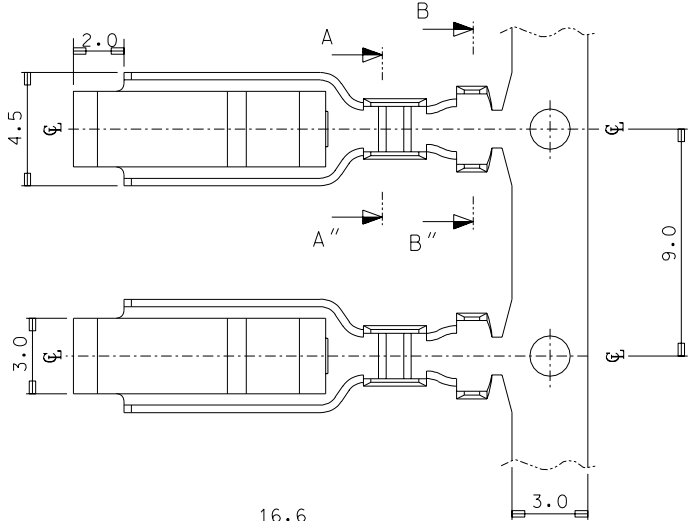
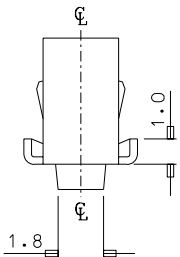
DO NOT SCALE DRAWING
DIMENSION IN METRIC

C

PROJECT NO.

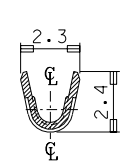
SIMILAR ITEM

DWG. NO. SD-35438-001

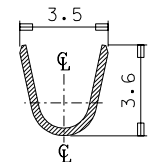


NOTES

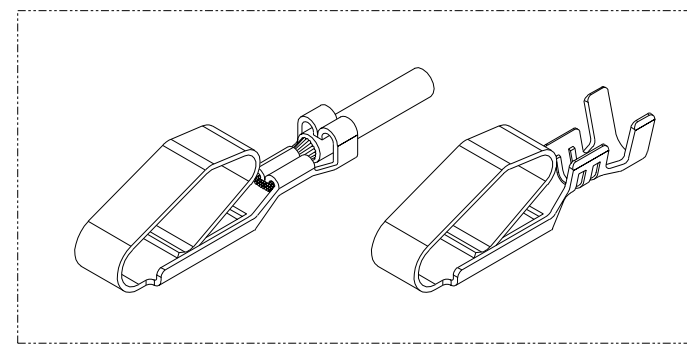
1. MATERIAL : PHOSPHOR BRONZE
THICKNESS : 0.3mm
2. FINISH : NONE
3. APPLICABLE WIRE : 0.5 - 0.85mm²
4. RECOMMENDED LENGTH OF WIRE STRIP IS 3.2-3.8mm.
5. GENERAL TOLERANCE : ±0.3



SEC' : A-A''



SEC' : B-B''



ISOMETRIC VIEW

| | | | | | | | | | | | | | |
|--------------------------------------------------------------------------------|----------------------------------|------------------------------------------------------|--------------|-------------------------------------------|---------------|-----------------------------|--------------------------------------------------------------------------------------|--------------------------------------|-----------------------------------------------------------------------------------------------------------------------------------------------------|----------------------------------------|-----|-----|--|
| NEW RELEASE EC NO. K0R1997-0154 DRWN: J.S.KANG 97/11/28 CHK: APPR: | DESCRIPTION MAJOR CRITICAL | QUALITY SYMBOLS MAJOR CRITICAL | | GENERAL TOLERANCES: (UNLESS SPECIFIED) | | SCALE 5:1 | DESIGN UNITS <input checked="" type="checkbox"/> mm <input type="checkbox"/> INCH | THIRD ANGLE PROJECTION | DIMENSIONS: <input type="checkbox"/> mm <input type="checkbox"/> INCH <input type="checkbox"/> mm <input checked="" type="checkbox"/> mm ONLY | | SHT | REV | |
| | | 4 PLACES ±0. | 3 PLACES ±0. | 2 PLACES ±0.15 | 1 PLACE ±0.25 | ANGULAR: ± 2° | | DRAWN BY & DATE J.S.KANG 97/11/28 | | TITLE: BULB SOCKET CONTACT TERMINAL | | | |
| | | DRAFT WHERE APPLICABLE MUST REMAIN WITHIN DIMENSIONS | | | | | | CHECKED BY & DATE B.K.CHOI | | APPROVED BY & DATE C.W.LEE | | | |
| | | CAD FILENAME sd35438.dgn | | MATERIAL NO. 35438-8000 | | DRAWING NO. SD-35438-001 | | SHEET NO. 1 OF 1 | | MOLEX INCORPORATED KOREA | | | |

THIS DRAWING CONTAINS INFORMATION THAT IS PROPRIETARY TO MOLEX INCORPORATED AND SHOULD NOT BE USED WITHOUT WRITTEN PERMISSION.